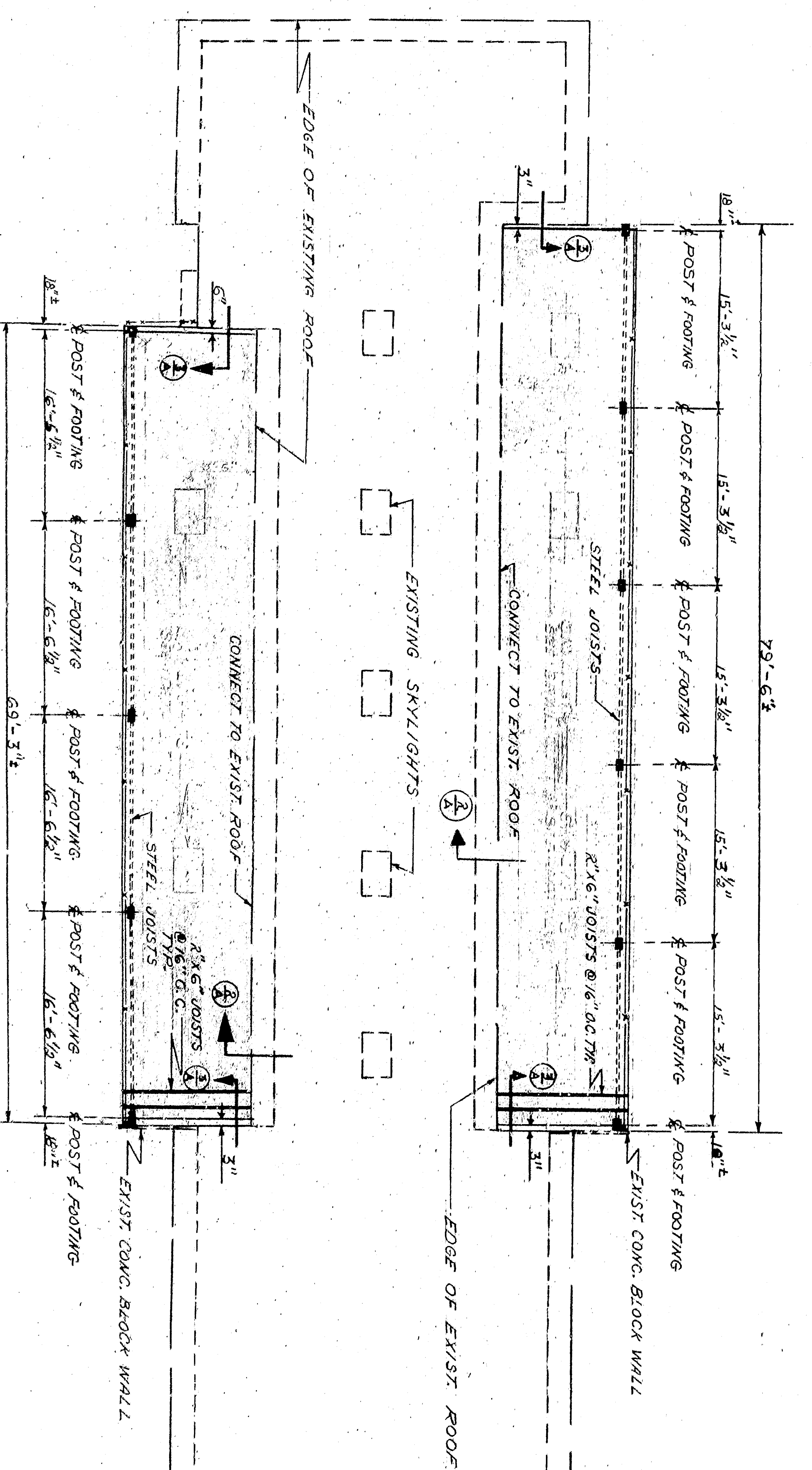
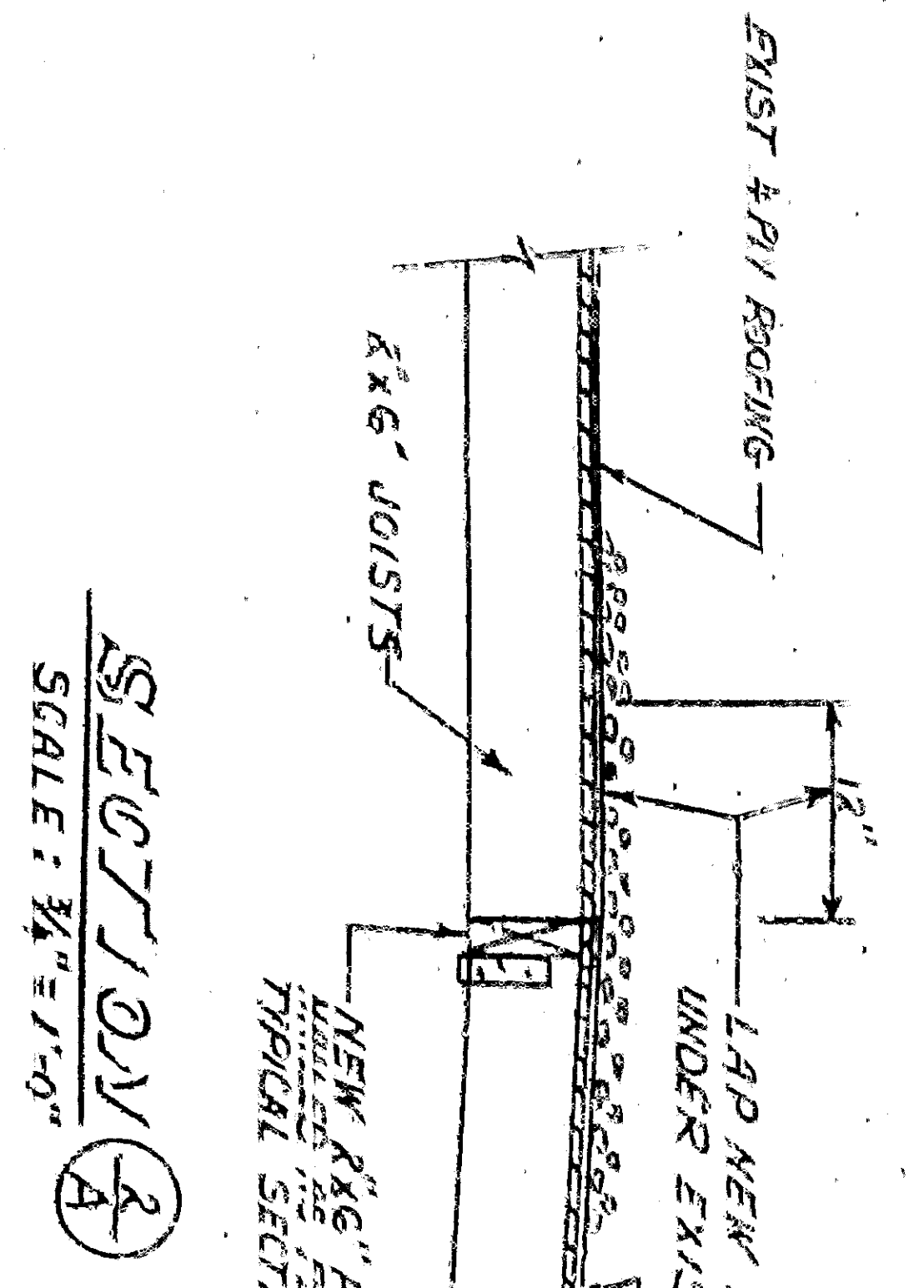


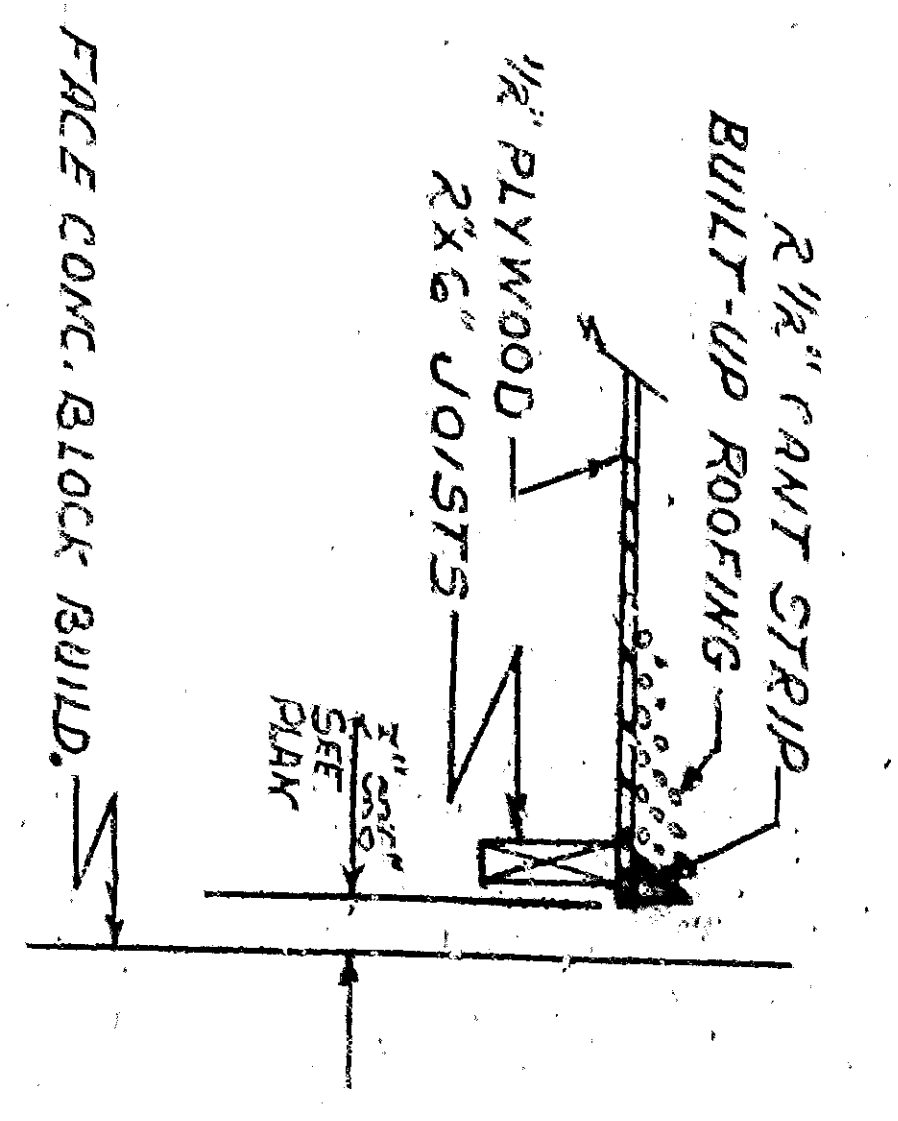
**TYPICAL SECTION OF NEW ROOF OVER KENNELS**  
SCALE: 3/8" = 1'-0"



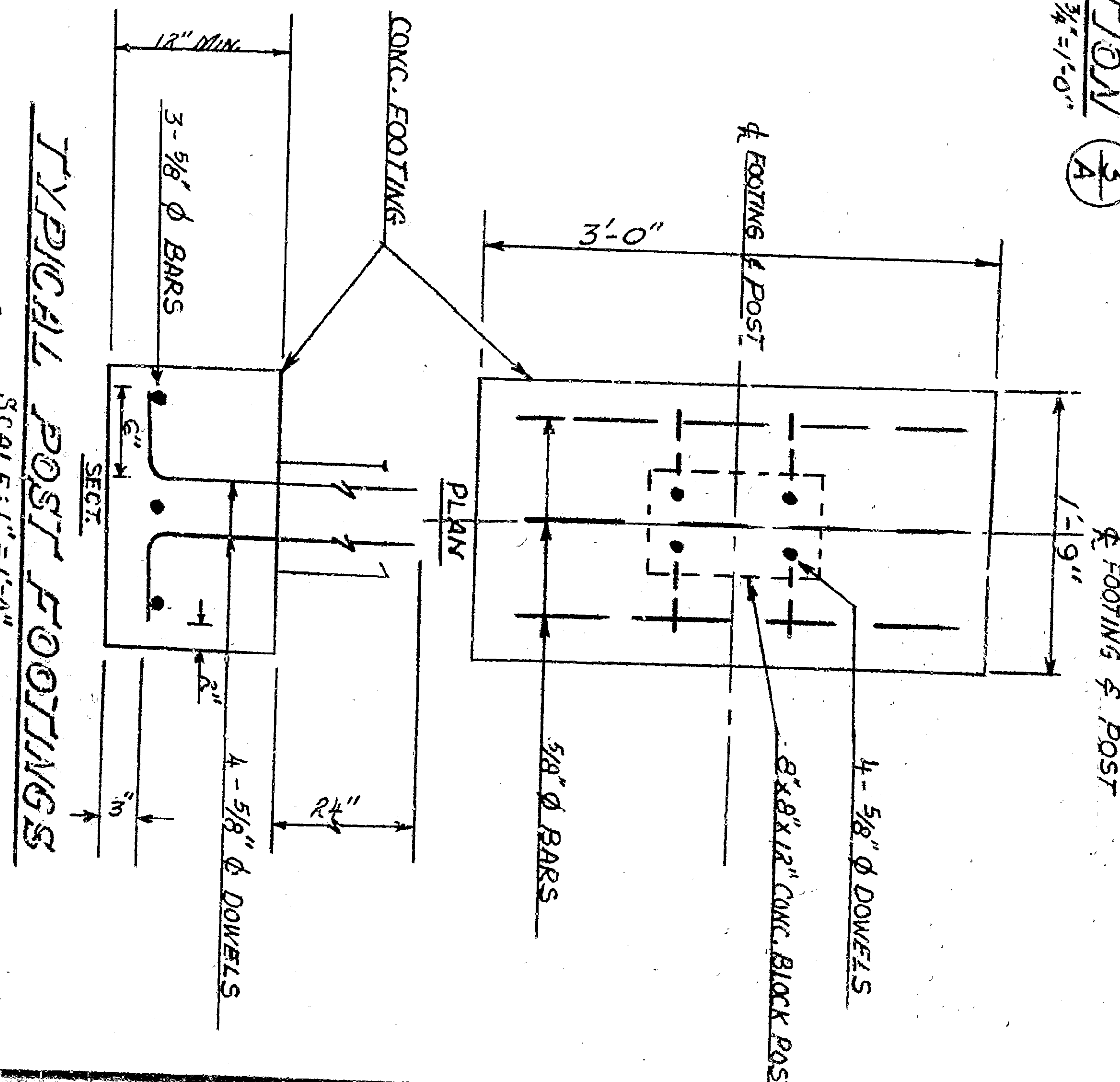
**ROOF FRAMING PLAN**  
SCALE: 1/8" = 1'-0"



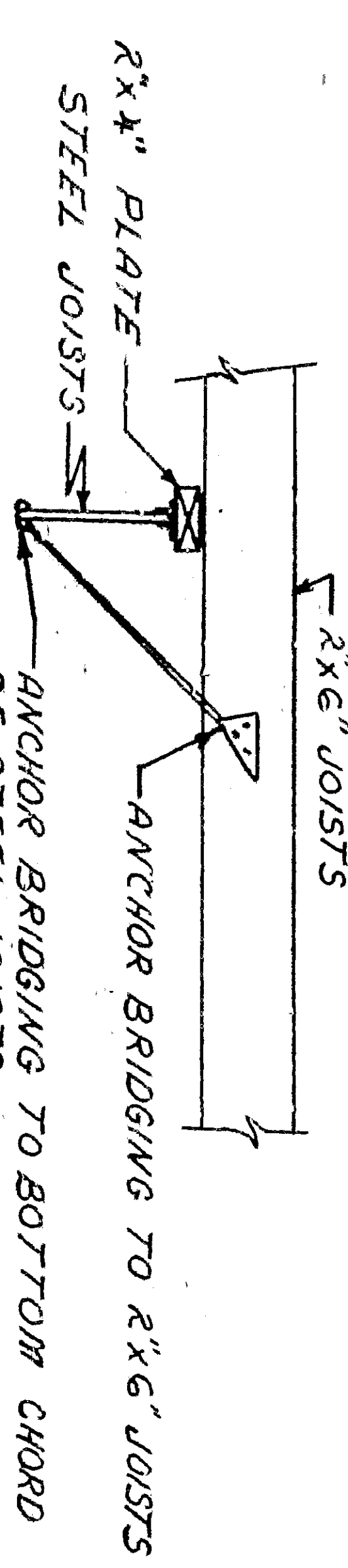
**SECTION 1**  
SCALE: 3/8" = 1'-0"



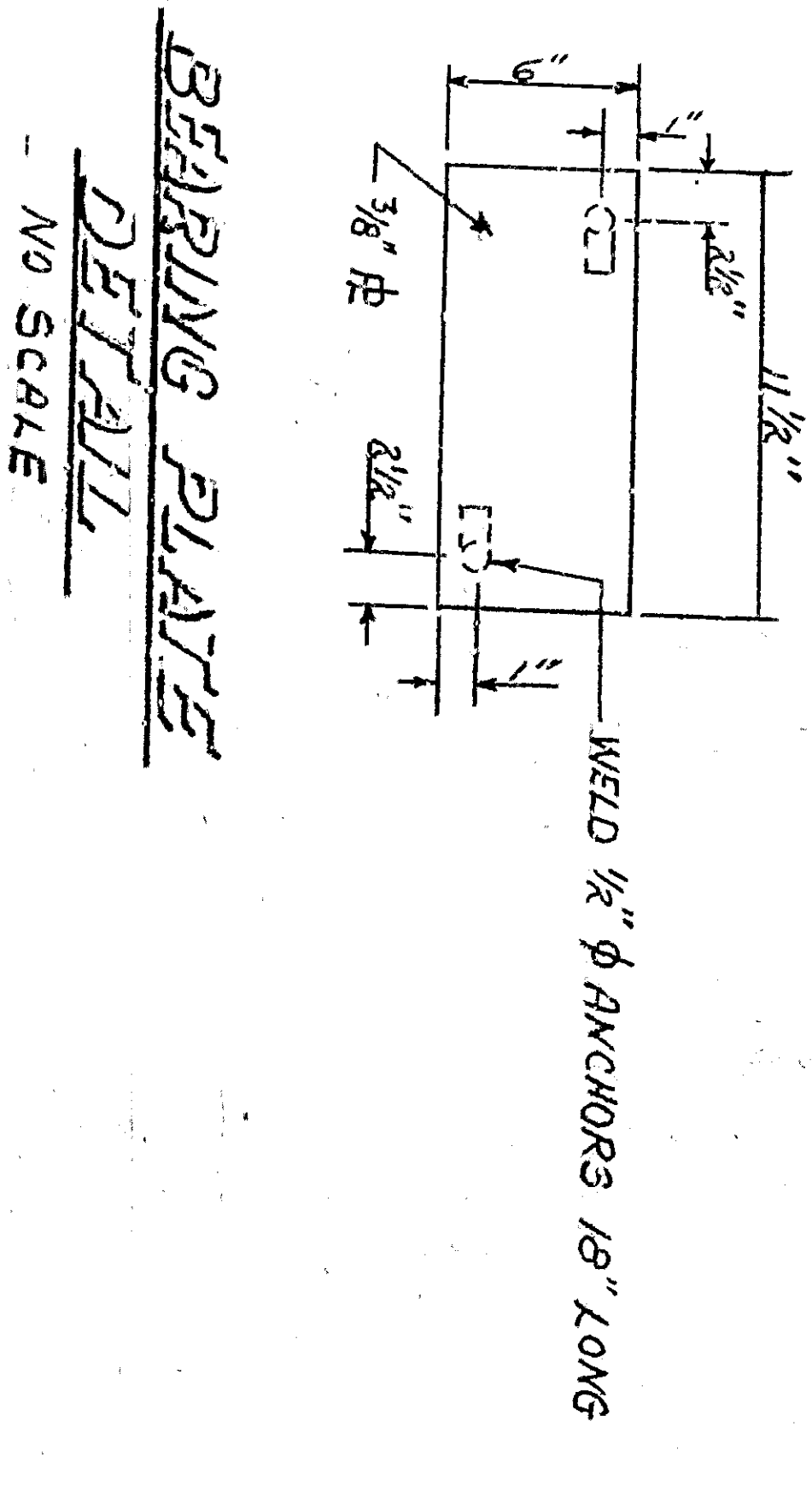
**SECTION 2**  
SCALE: 3/8" = 1'-0"



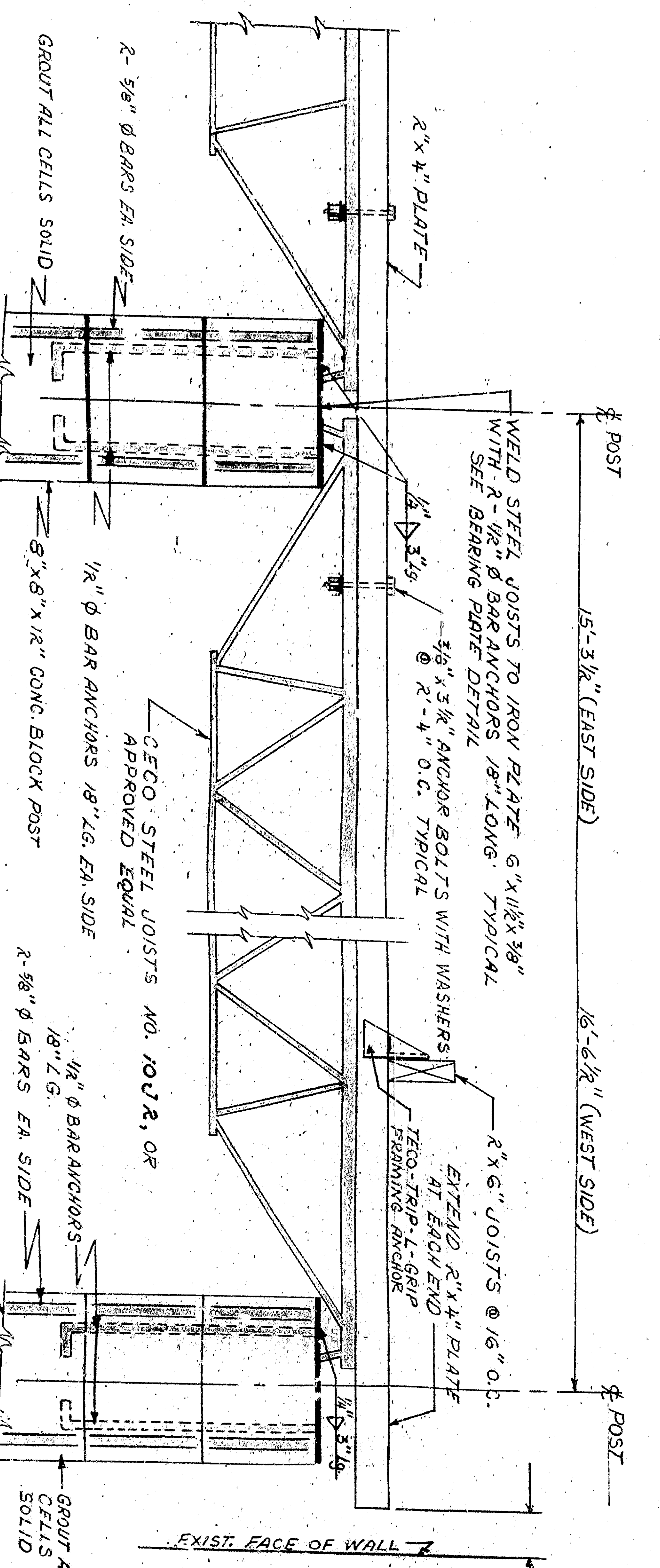
**TYPICAL POST FOOTINGS**  
SCALE: 1/2" = 1'-0"



**BRIDGING DETAIL**  
SCALE: 3/8" = 1'-0"



**BEARING PLATE DETAIL**  
NO SCALE



**TYPICAL SECTION STEEL JOISTS**  
SCALE: 1/2" = 1'-0"

APPROVED	DATE	1944
<i>D. M. B.</i>		
REGISTERED CIVIL ENGINEER		
DRAWING NO.	3374	
CHECKED BY	HOVEL	
SHEET 1 OF	RECOMMENDED	18
DEPARTMENT OF ENGINEERING CITY OF SAN BERNARDINO NEW ROOF OVER KENNELS AT CITY DOG POUND 1303 SOUTH "E." STREET		